

Proposal for how to try/evaluate/train in the Roxtec Transit Build™ software using the Test Asset.

Try it on your own first

Start by familiarizing yourself with the web application. Log in with your customer account on <https://transitbuild.roxtec.com>

The first screen you see is the dashboard. It gives an overview of the complete asset and what has been happening lately.

Below the pie chart you find a row of tabs. Explore them:

- The Transit tab lists all the transits. Click on a transit to see the log of that specific transit and its openings.
- The Floorplan tab has the transits plotted on a drawing. Each transit has a circle in the color of its status. Hover a circle to see more information. Click a circle to go to the transit log. In the paid version of the software, this is where you upload your own specific drawings in PDF format.
- The Document tab contains documentation valid for the entire asset. If you have clicked on a specific transit you also have a Document tab, but that documentation is specific to that transit.

Now download and install the Android app

<https://play.google.com/store/apps/details?id=com.roxtec.transitbuild.app>

Log in with the same credentials as on the web. As you are "Customer Admin" you have all the rights in the app, so follow the "Start working" example below to familiarize yourself with the app.

The app has some help functionality for you when you first use it.

Physical training exercise

Prepare for the exercise by printing out the pictures of transits you find at the end of this document. This document can also be found in the Document tab on your Test Asset in the software itself.

Log in with your customer account on <https://transitbuild.roxtec.com>

Invite the intended users to a physical meeting, using a large enough room and stick the pictures of transits to the walls of the room.

Android devices

Preferably, use one device per participant, in order to get the full potential of "who did what and when". It is possible to have fewer devices than participants but we recommend at least two devices, so that they can be signed in with different access levels in the system.

Roxtec International AB

Box 540, 371 23 Karlskrona, Sweden, phone +46 455 36 67 00, fax +46 455 820 12, email info@roxtec.com
website www.roxtec.com, bank SEB Merchant Banking, 106 40 Stockholm, Sweden, bank giro service 5639-0800
bic ESSESESS, iban EUR SE81 5000 0000 0590 1821 6798, EUR account 5901-82 167 98, USD account 5501-82 964 10
SEK account 5681-10 040 61, vat no SE556370806301, reg. office Karlskrona, Sweden, reg. no 556370-8063

Invite the participants to the system

Have the **customer administrator** (the person who created the company account) invite the participants by using the “People” function found in the left bar in the web application. Define different levels to each person in the team, use at least **Level 1** and **Level 2**.

Participant registration

Each participant that has been invited will receive an email with instructions on how to register as a user (free of charge) and how to create an account.

Preferably use email addresses the participants can reach from the Android devices mentioned above (it is also possible to register using a computer)

Once that is done, it is time to download the app from Google Play Store

<https://play.google.com/store/apps/details?id=com.roxtec.transitbuild.app>

Once all collaborators have installed the app and used their sign in credentials from the sign up, it is time to start working.

Start working

Send a user with **Level 1** access (*grinder/welder*) to fix an issue with **Sample Transit 4**.

1. Sync the latest data to the Android app by swiping right on the *Sample Asset* on his device
2. When synced tap on the *Sample Asset*, a list of transits will appear
3. Walk over to the photo representing **Sample Transit 4**
4. Press the QR-scan button (bottom right corner in the app) and scan the yellow ID-tag next to the photo
5. This will bring up that specific transit in the app
6. “The work is performed” and it’s time to report a new status
7. Press the “**Set status**” at the bottom of the screen
8. Mark the white opening by tapping once on it, then press the camera button in the top menu and take a photo of the photo
9. Press ok or checkmark in the camera app when you are pleased with the shot to get back to the edit status page
10. Now press the “Comment” button to the right of the Camera button and write a comment on your work
11. Finally select the new status **FD**
12. Now your documentation of the work performed is complete, press the check mark in the most up right corner.

Since this was all the “grinder/welder” had to do this day, he can now sync his work to the Cloud by pressing the back arrow in the left corner to get back to the view where the *Sample Asset* is listed. Swipe to the right to perform the sync.

By using the web application, the **Customer admin** is now able to see that the work has been performed on **Sample Asset 4** and also look at the picture and read the comment.

After sync you will see the updated result on the web (dashboard)

Quality assurance

Send a user with **Level 2** access (*welding QA*) to approve the work that has been performed (Level 2 has other statuses available)

This person is new to the site so he will need to use the “locate” function to find where to go.

1. Sync the latest data to the device by swiping right on the *Sample Asset* on his device
2. When synced tap on the *Sample Asset*, a list of transits will appear
3. Use the filter option in the top right to find transits with the status **FD**
4. Press the transit listed and use the locate symbol at the bottom of the screen
5. Press the “Set status” at the bottom of the screen
6. Now mark the white opening by tapping once on it, then press the camera button in the top menu and take a photo of the photo
7. Press ok or checkmark in the camera app when you are pleased with the shot to get back to the edit status page
8. Now press the “Comment” button to the right of the Camera button and write a comment on your work
9. Finally select the new status **FA**
10. Now your documentation of the work performed is complete so press the check mark in the most up right corner.

After sync you will see the updated result on the web (dashboard)

Installer

Now send an “installer” to **Sample Transit 6**. Find it either through scanning the tag or with the locate function. By pressing the transit on the device twice the installer will get to the details section to see “overview” “documents” and “event log”.

Press the Documents tab (Or swipe left) to see available documents.

Click on the Design specification to see how to pack the transit. “Perform the installation” and then set a status and take a photo, write a comment as per above instructions.



Now feel free to work with several people at the same time, perform status changes, take photos and even **add new transits** using the + button.
New transits can be plotted on the drawing using the app with the "change or view Marked Location" at the bottom of the edit transit page.
Follow the progress on the web application. After sync you will see the updated result on the web (dashboard)

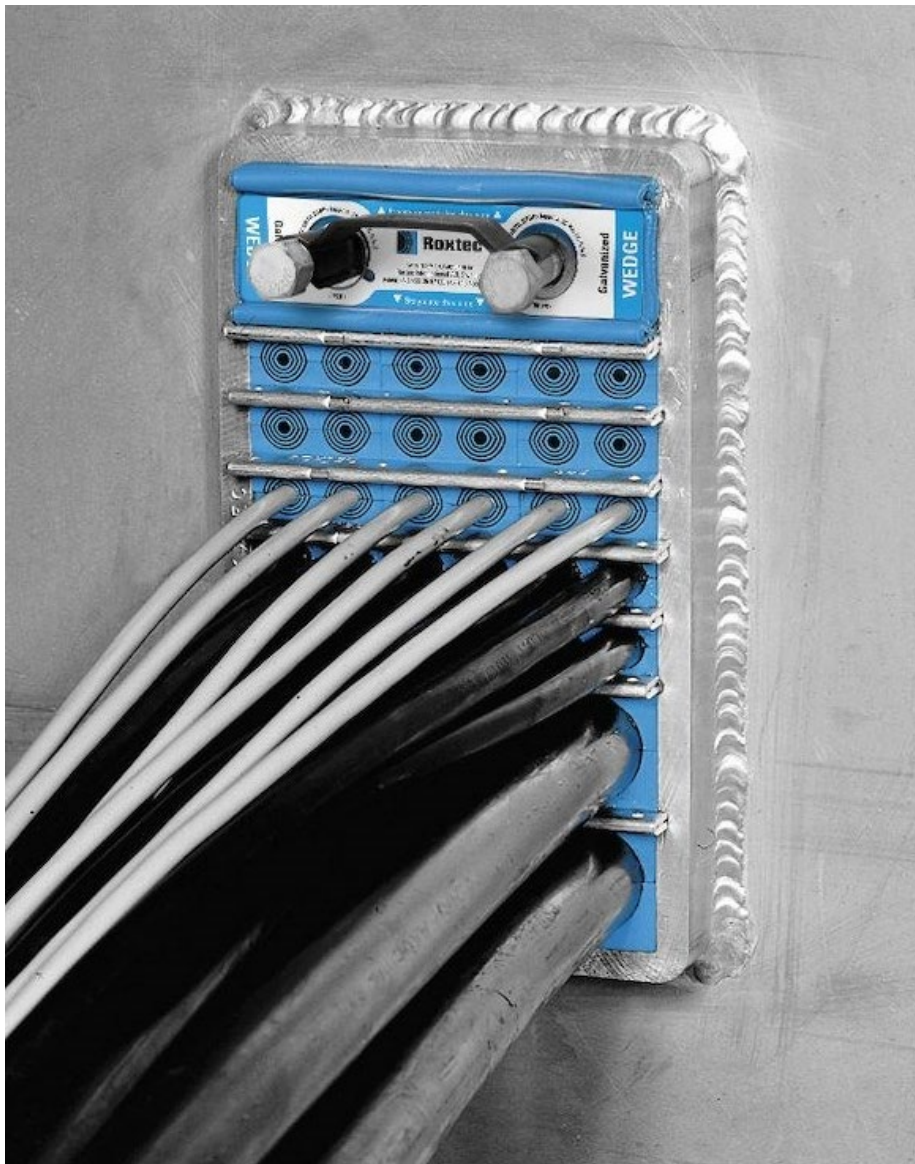
Demo

If you find this interesting, please feel welcome to book a demo with our Specialist Mattias Persson by using this form: <https://calendly.com/roxtec-digital/60min>

Roxtec International AB

Box 540, 371 23 Karlskrona, Sweden, phone +46 455 36 67 00, fax +46 455 820 12, email info@roxtec.com
website www.roxtec.com, bank SEB Merchant Banking, 106 40 Stockholm, Sweden, bank giro service 5639-0800
bic ESSESESS, iban EUR SE81 5000 0000 0590 1821 6798, EUR account 5901-82 167 98, USD account 5501-82 964 10
SEK account 5681-10 040 61, vat no SE556370806301, reg. office Karlskrona, Sweden, reg. no 556370-8063

Sample Transit 1 ID-tag number 20218

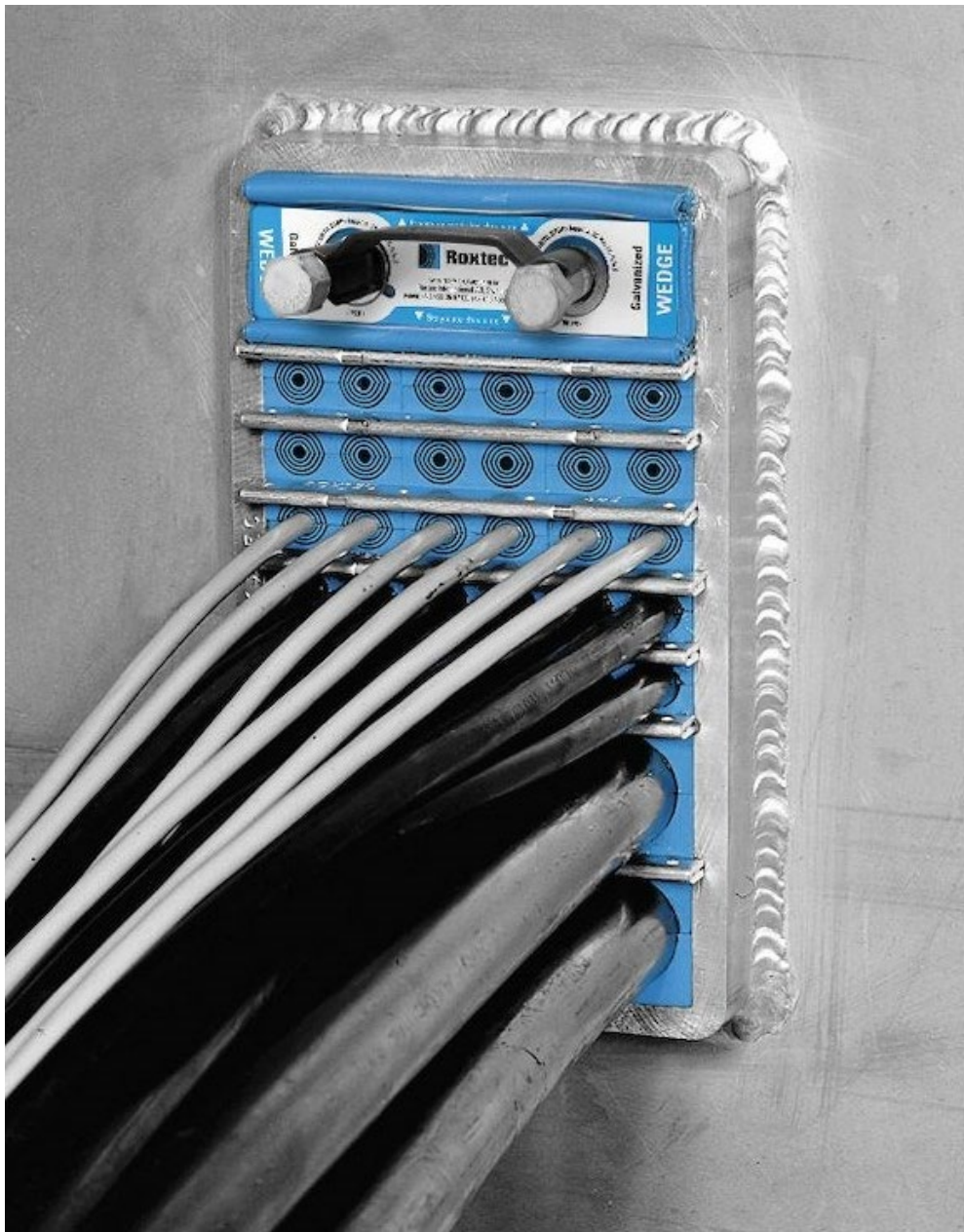


Roxtec International AB

Box 540, 371 23 Karlskrona, Sweden, phone +46 455 36 67 00, fax +46 455 820 12, email info@roxtec.com
website www.roxtec.com, bank SEB Merchant Banking, 106 40 Stockholm, Sweden, bank giro service 5639-0800
bic ESSESESS, iban EUR SE81 5000 0000 0590 1821 6798, EUR account 5901-82 167 98, USD account 5501-82 964 10
SEK account 5681-10 040 61, vat no SE556370806301, reg. office Karlskrona, Sweden, reg. no 556370-8063



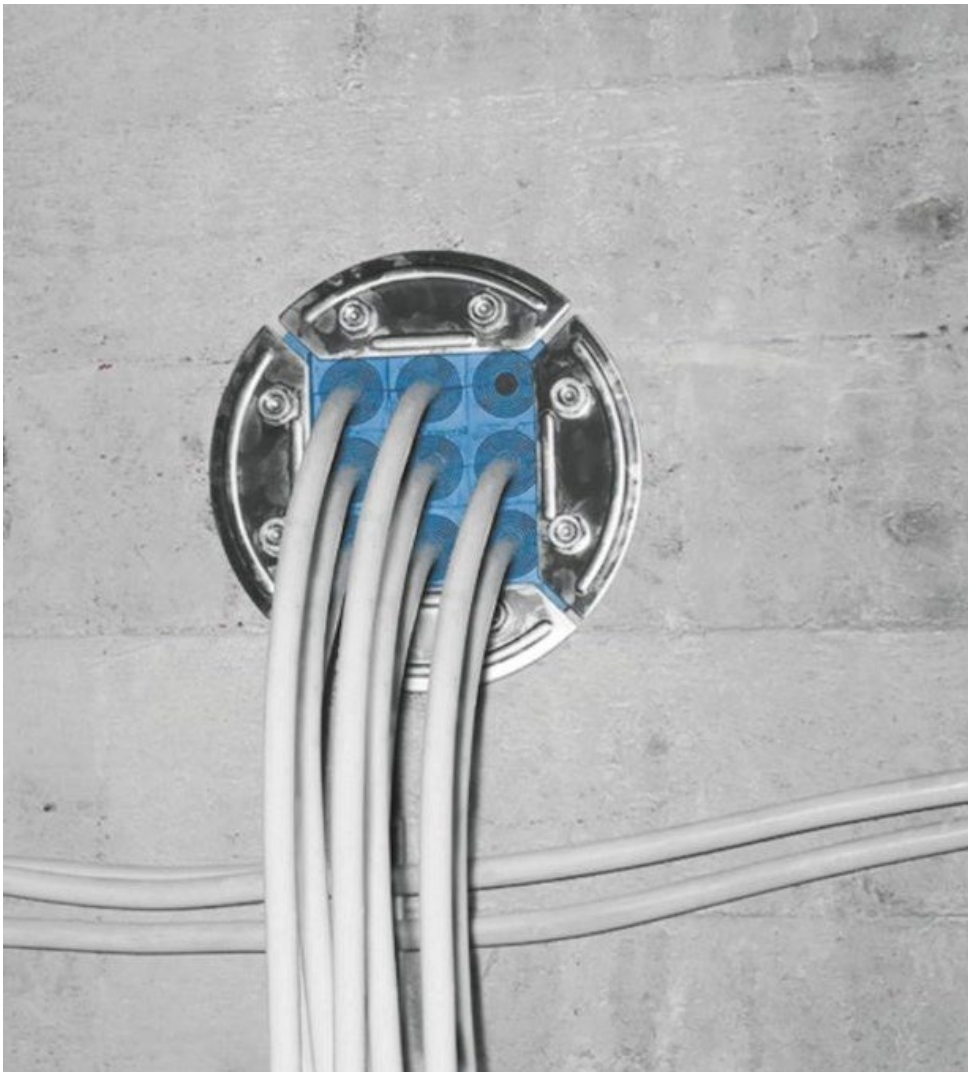
Sample Transit 2 ID-tag number 20219



Roxtec International AB

Box 540, 371 23 Karlskrona, Sweden, phone +46 455 36 67 00, fax +46 455 820 12, email info@roxtec.com
website www.roxtec.com, bank SEB Merchant Banking, 106 40 Stockholm, Sweden, bank giro service 5639-0800
bic ESSESESS, iban EUR SE81 5000 0000 0590 1821 6798, EUR account 5901-82 167 98, USD account 5501-82 964 10
SEK account 5681-10 040 61, vat no SE556370806301, reg. office Karlskrona, Sweden, reg. no 556370-8063

Sample Transit 3 ID-tag number 20220



Roxtec International AB

Box 540, 371 23 Karlskrona, Sweden, phone +46 455 36 67 00, fax +46 455 820 12, email info@roxtec.com
website www.roxtec.com, bank SEB Merchant Banking, 106 40 Stockholm, Sweden, bank giro service 5639-0800
bic ESSESESS, iban EUR SE81 5000 0000 0590 1821 6798, EUR account 5901-82 167 98, USD account 5501-82 964 10
SEK account 5681-10 040 61, vat no SE556370806301, reg. office Karlskrona, Sweden, reg. no 556370-8063

Sample Transit 4 ID-tag number 20221

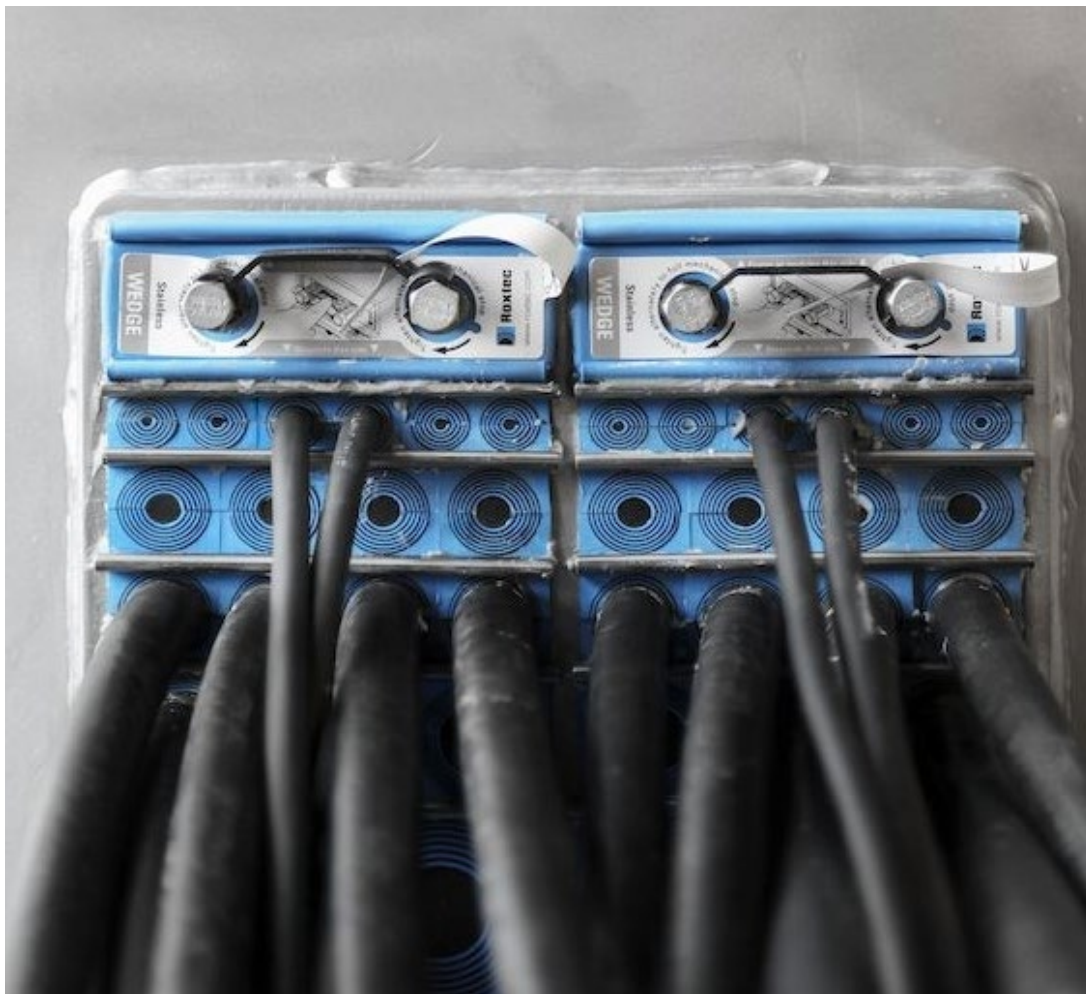


Roxtec International AB

Box 540, 371 23 Karlskrona, Sweden, phone +46 455 36 67 00, fax +46 455 820 12, email info@roxtec.com
website www.roxtec.com, bank SEB Merchant Banking, 106 40 Stockholm, Sweden, bank giro service 5639-0800
bic ESSESESS, iban EUR SE81 5000 0000 0590 1821 6798, EUR account 5901-82 167 98, USD account 5501-82 964 10
SEK account 5681-10 040 61, vat no SE556370806301, reg. office Karlskrona, Sweden, reg. no 556370-8063



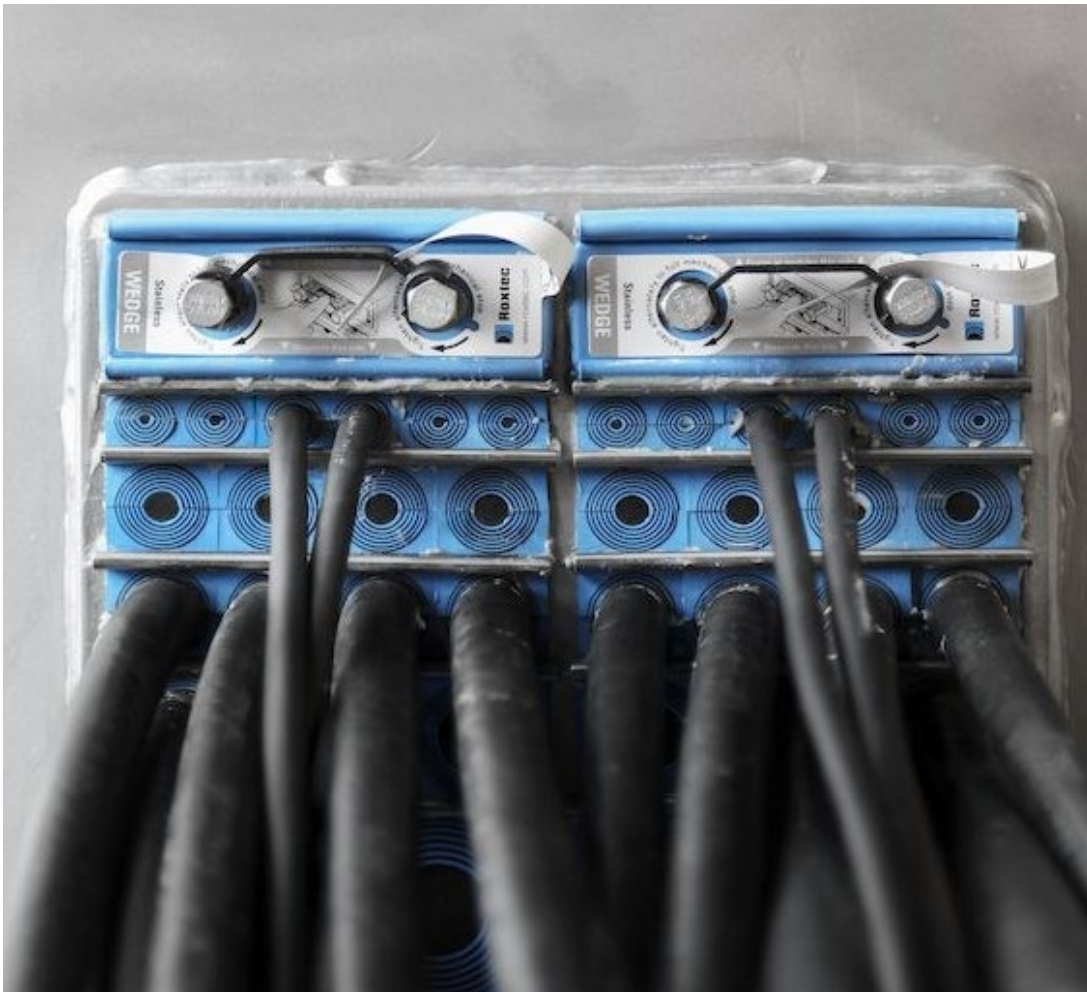
Sample Transit 5 ID-tag number 20222



Roxtec International AB

Box 540, 371 23 Karlskrona, Sweden, phone +46 455 36 67 00, fax +46 455 820 12, email info@roxtec.com
website www.roxtec.com, bank SEB Merchant Banking, 106 40 Stockholm, Sweden, bank giro service 5639-0800
bic ESSESESS, iban EUR SE81 5000 0000 0590 1821 6798, EUR account 5901-82 167 98, USD account 5501-82 964 10
SEK account 5681-10 040 61, vat no SE556370806301, reg. office Karlskrona, Sweden, reg. no 556370-8063

Sample Transit 6 ID-tag number 20223



Roxtec International AB

Box 540, 371 23 Karlskrona, Sweden, phone +46 455 36 67 00, fax +46 455 820 12, email info@roxtec.com
website www.roxtec.com, bank SEB Merchant Banking, 106 40 Stockholm, Sweden, bank giro service 5639-0800
bic ESSESESS, iban EUR SE81 5000 0000 0590 1821 6798, EUR account 5901-82 167 98, USD account 5501-82 964 10
SEK account 5681-10 040 61, vat no SE556370806301, reg. office Karlskrona, Sweden, reg. no 556370-8063